



KROSS



kross

Break the traditional office furniture element, finding new joint after recombination. Multi-fold craft and hollow out metal legs of KROSS side cabinet, penetrating the deconstruction design idea. KROSS insists on cross-boundary combination, showing more design inspiration. Including both metal, wood, and glass, also with home furniture design.



钢化玻璃侧台
Tempering glass side desk



翻转式线盒
Flip over cable box



镂空钢制下脚
Hollow out steel legs



无线充电
Wireless charging



班台侧柜采用多折面边型设计，内置电脑主机位等储藏功能。
The side cabinet of executive desk is applied with multi-fold edge and equipped with built-in CPU place.



EA86 独立桌，可选配活动长柜、推柜。
EA86 independent desk, optional mobile cabinet.



EA87 主管桌拥有多种尺寸选择，满足不同大小的空间需求。
EA87 executive desk has several optional dimensions, to meet different room size requirements.





沟通，源于零距离的分享。多媒体互动演绎，直达你心。

Communication come from the share with zero distance.
Multimedia interactive touch your heart directly.

打破传统的单一空间分割方式，将家居设计元素融入文件柜，结合立式衣柜和书架，打造错落有致，刚柔并济的办公空间。

Break the traditional room section way, melt the home furniture design element into file cabinet, combine with the vertical closet and bookshelf to create a well-proportioned and flexible office room.



智能交互平板

Intelligent interactive tablet

希沃交互式智能平板是一款使用屏幕触摸操作的多功能一体化办公展示设备。集成了定位、显示、信号传输、多媒体等多种技术的最新成果。适用于群体沟通、高清图像展示、远程视频会议、多媒体信息发布等场合，可有效提升群体沟通效率，改善沟通环境。

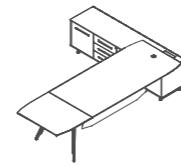
Shiv use interactive smart tablet is a touch screen display operations in-one office equipment, integrated office display equipment. Integrated positioning, display, latest results signal transmission, multimedia and other technologies. Suitable for group communication, high-definition image display, remote video conference, multimedia information and so on, can effectively enhance the efficiency of group communication, improve communication environment.



1. 采用木质柜 + 钢制支架的结合方式;
2. 可调节式钢制支架, 便于不同尺寸的互动平板的挂置;
3. 柜体顶板三面突出, 防止放置的物品滑落;
4. 带刹车轮的移动推柜, 适合空间的自由转换;
5. 收纳需求——增加开门式存储柜, 风格利落简洁;

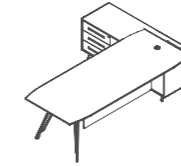
1. using wooden cabinet + steel scaffold binding mode;
2. adjustable steel bracket for easy interactive flat hang different sizes;
3. prominent cabinet roof on three sides to prevent items placed in the fall;
4. the mobile cabinet with brake wheels pushed for space free conversion;
5. the storage needs-increased storage cabinet door type, style simple and neat;

班台 / Executive Manager



大班台 EA88 (L/R)
Executive manager

W3460*D2391*H760(mm)
W3260*D2391*H760(mm)
W3060*D2391*H760(mm)
W2860*D2391*H760(mm)



中班台 EA87 (L/R)
Executive manager

W2600*D1861*H760(mm)
W2400*D1861*H760(mm)
W2200*D1811*H760(mm)
W2000*D1811*H760(mm)



小班台 EA86
Executive manager

W2400*D1000*H760(mm)
W2200*D1000*H760(mm)
W2000*D900*H760(mm)
W1800*D900*H760(mm)

会议桌 洽谈桌 / Meeting Table



会议桌 EA78
Meeting table

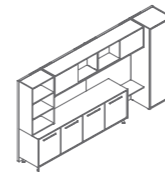
W4600*D1600*H760(mm)
W3600*D1600*H760(mm)
W3000*D1400*H760(mm)
W2400*D1200*H760(mm)



洽谈桌 EA70
Meeting table

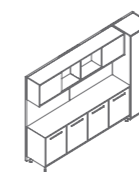
∅1000*H760(mm)

文件柜 / Cabinet



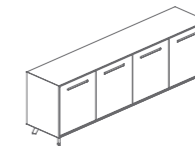
文件柜 EA98 (L/R)
Cabinet

W3600*D560*H1920(mm)



文件柜 EA97 (L/R)
Cabinet

W3000*D560*H1920(mm)
W2400*D560*H1920(mm)



文件柜 EA96
Cabinet

W2400*D520*H800(mm)
W1800*D520*H800(mm)



活动柜 EA27
Cabinet

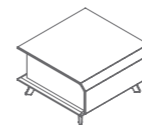
W1121*D560*H619(mm)



活动柜 EA25
Cabinet

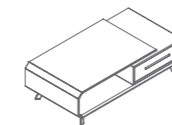
W585*D560*H619(mm)

茶几 / Coffee Table



茶几 EA11.700
Coffee table

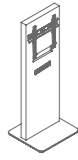
W700*D700*H420(mm)



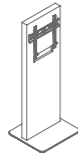
茶几 EA11.1380
Coffee table

W1380*D700*H420(mm)

移动资讯柜 / Movable Information Cabinet



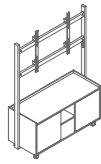
移动资讯柜 EFJH16
Movable information cabinet
W600*D540*H1600(mm)



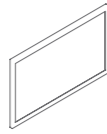
移动资讯柜 EFJ16
Movable information cabinet
W600*D540*H1600(mm)



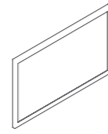
多功能插座 (选配) EFJ18
Multi-functional socket
插座模块含 2 个店员、1 个网络 (CAT.6)、
1 个电话、一个 HDMI、1 个出线模块
The socket including 2 power, Internet
(Internet plug is 6 series) 1 phone, 1 VGA,
and 1 flux line.



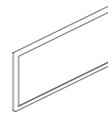
EFJ21
木质柜 + 钢制支架结合
移动推柜带刹车柜, 适合不同空间
的自由转换
Wooden cabinet+steel scaffold
binding Mobile Push cabinet with
brake wheel,fitness Together freely
switch between different spaces



EFJ22H
LED 电视机, 采用现代触控技术,
触摸使用寿命 8000 小时以上, 支
持 WIFI 无线网络及无线传屏
LED TV, with modern touch
technology, Touch the life of more
than 8000 hours, Support WIFI
wireless network and wireless
transmission screen



EFJ22
LED 电视机, 采用现代触控技术,
触摸使用寿命 8000 小时以上, 不
支持无线传屏
LED TV, with modern touch
technology, Touch the life of more
than 8000 hours, and does not
support wireless transmission screen



EFJ17 电视机 索尼 40 寸 LED
EFJ17 SONY 40 inch TV
电视为选配件, 也可客户自行提供
电视, 电视机尺寸空位需符合移动
资讯柜安装铁架的尺寸
The Standard TV is optional, you can
use your own TV as well if the size
can match the mobile information
cabinet

材质 / Material



W-24B 胡桃木色
W-24B Walnut



W-8A 枫木色
W-8A Maple



白色油漆
White Anti-bacterial Paints